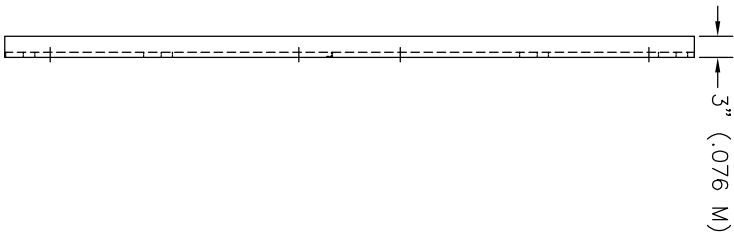
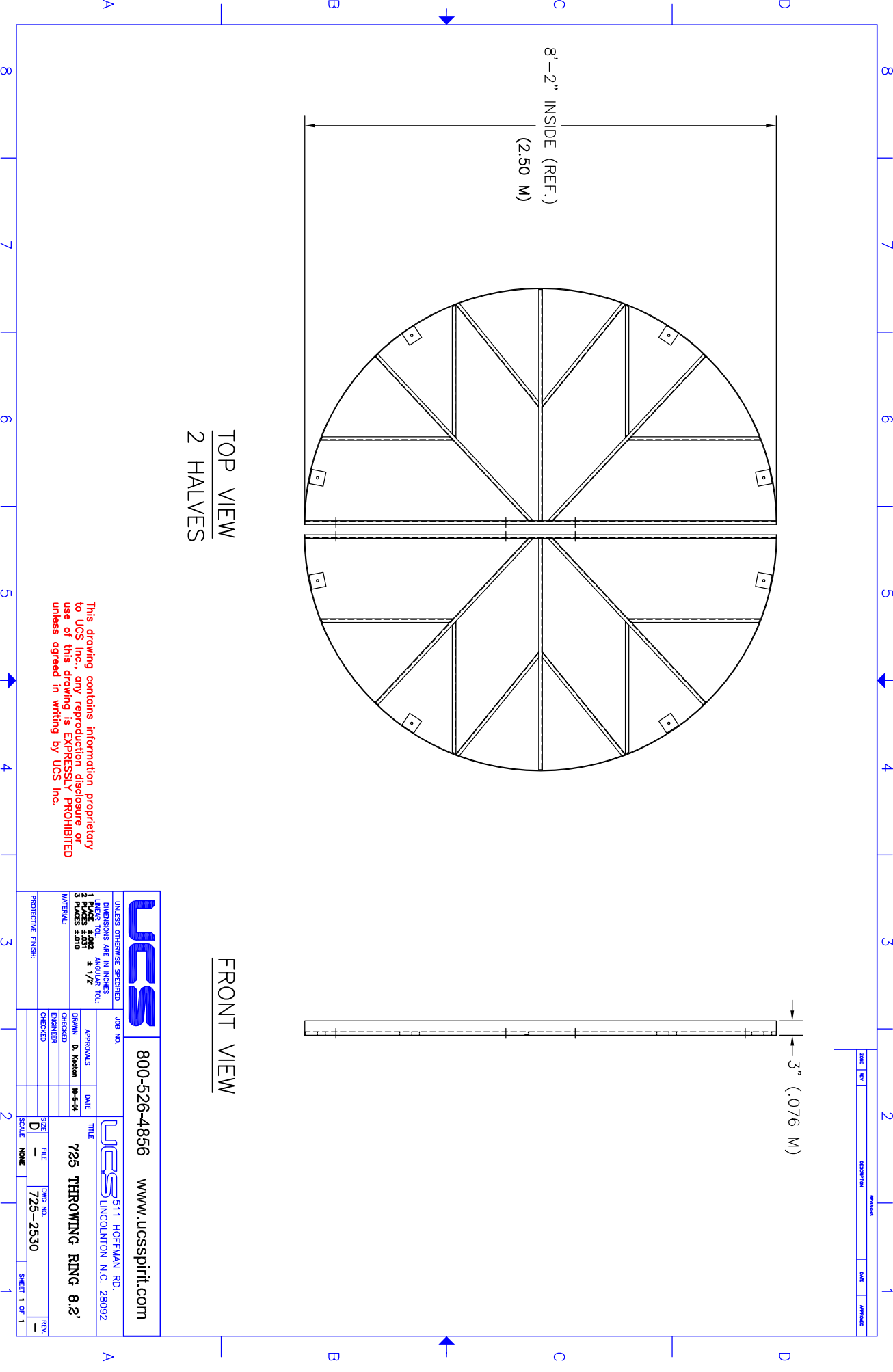


TOP VIEW
2 HALVES



FRONT VIEW



ZONE	REV	DESCRIPTION	REVISION	DATE	APPROVED

This drawing contains information proprietary to UCS Inc., any reproduction disclosure or use of this drawing is EXPRESSLY PROHIBITED unless agreed in writing by UCS Inc.

		800-526-4856 www.ucsspirit.com	
<small>UNLESS OTHERWISE SPECIFIED DIMENSIONS ARE IN INCHES. LINEAR TOL: ± .005 HOLE ± .002 ANGLE ± .010 PLACES ± .010 MATERIAL:</small>		<small>JOB NO.</small> <small>APPROVALS</small> <small>DRAWN: D. Keaton</small> <small>DATE: 10-5-10</small> <small>CHECKED:</small> <small>ENGINEER:</small> <small>CHECKED:</small>	
<small>PROTECTIVE FINISH:</small>		<small>TITLE</small> 725 THROWING RING 8.2' <small>UCS 511 HOFFMAN RD. LINCOLNTON N.C. 28092</small>	
<small>SIZE</small> D	<small>FILE</small> -	<small>DWG NO.</small> 725-2530	<small>REV.</small> -
<small>SCALE</small> NONE	<small>SHEET</small> 1 OF 1		